

R. 9 E.

R. 10 E.

R. 11 E.

T. 5 S.

T. 5 S.

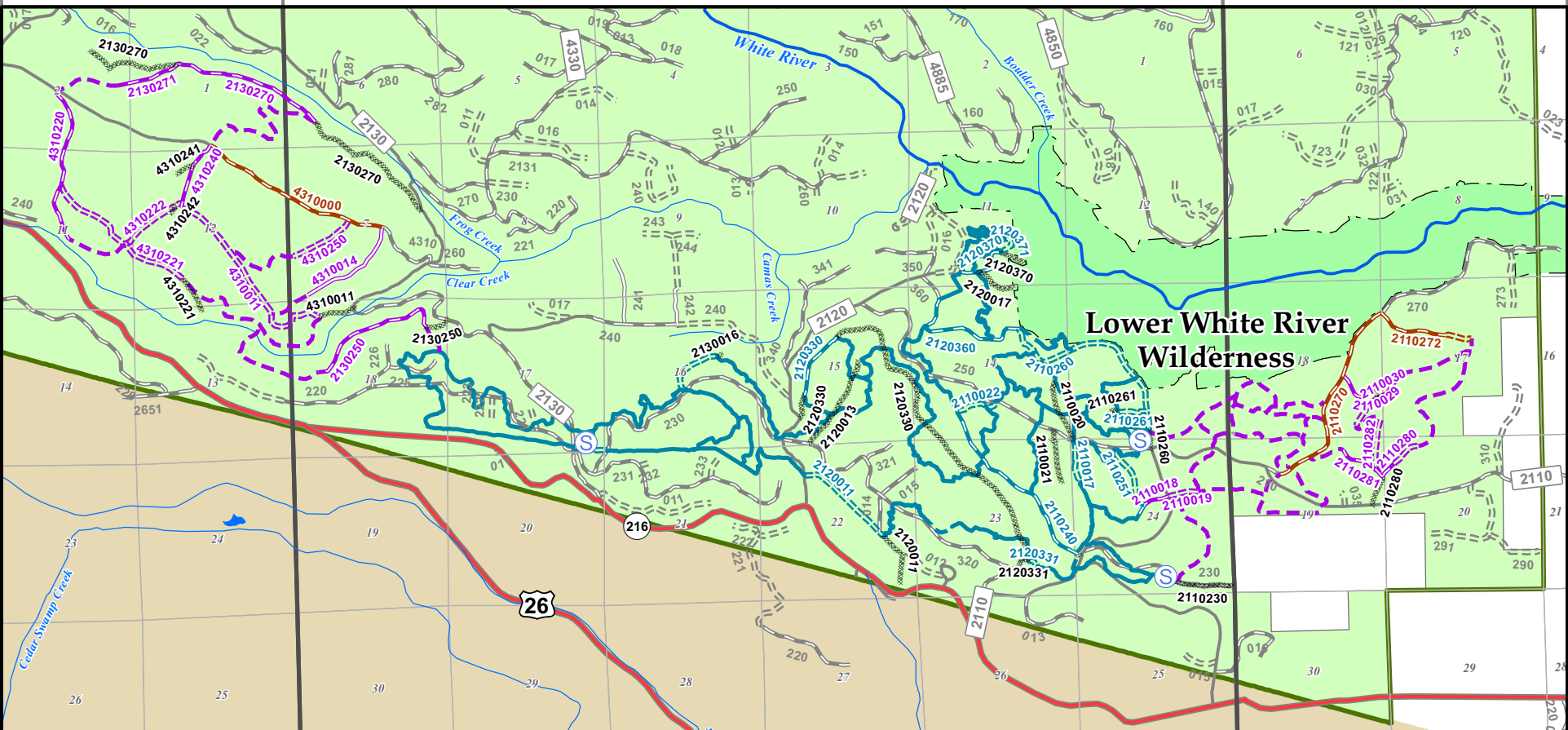
T. 6 S.

T. 6 S.

R. 9 E.

R. 10 E.

R. 11 E.



### Lower White River Wilderness



## Mount Hood National Forest Alternative 3 OHV Proposal McCubbins Gulch

### OHV Decision Roads

- Close to All Traffic
- Convert to OR OHV Classes I, III ATVs
- Convert to OR OHV Classes I, III ATVs
- Convert to OR OHV Class III ATVs
- Convert to OR OHV Class III ATVs
- Convert to OR OHV Class III ATVs
- Mixed-Use: OR OHV Classes I, III ATVs
- Mixed-Use: OR OHV Classes I, III ATVs
- Mixed-Use: OR OHV Classes I, III ATVs

### OHV Trails and Features

- Existing Trail: Class I, III ATVs
- Proposed Trail: Class I, III ATVs
- Proposed Trail: Class III ATVs only
- Staging Area

### Existing US Forest Service

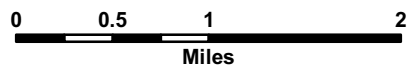
- Mt. Hood National Forest
- Wilderness
- FS Paved Roads
- FS Gravel Roads
- FS Improved Dirt Roads
- FS Dirt Roads

### Highways and Roads

- Other Paved Roads
- Highways

### Other Features

- Lakes, Ponds, Wetlands
- Rivers
- Named Creeks
- Warm Springs Indian Res.
- State, Local, Private



This product is produced from information prepared by the USDA, Forest Service, or from other suppliers. The Forest Service can not assure the reliability or suitability of this information for a particular purpose. The data and product accuracy may vary due to compilation from various sources, including modeling and interpretation, and may not meet National Map Accuracy Standards. This information may be updated, corrected, or otherwise modified without notification. For more information contact:

Mt. Hood National Forest, 16400 Champion Way, Sandy, OR 97055  
(503) 668-1700



The USDA is an equal opportunity provider and employer.