

R. 8 E.

R. 9 E.

R. 10 E.

T. 2 N.

T. 2 N.

T. 1 N.

T. 1 N.

T. 1 S.

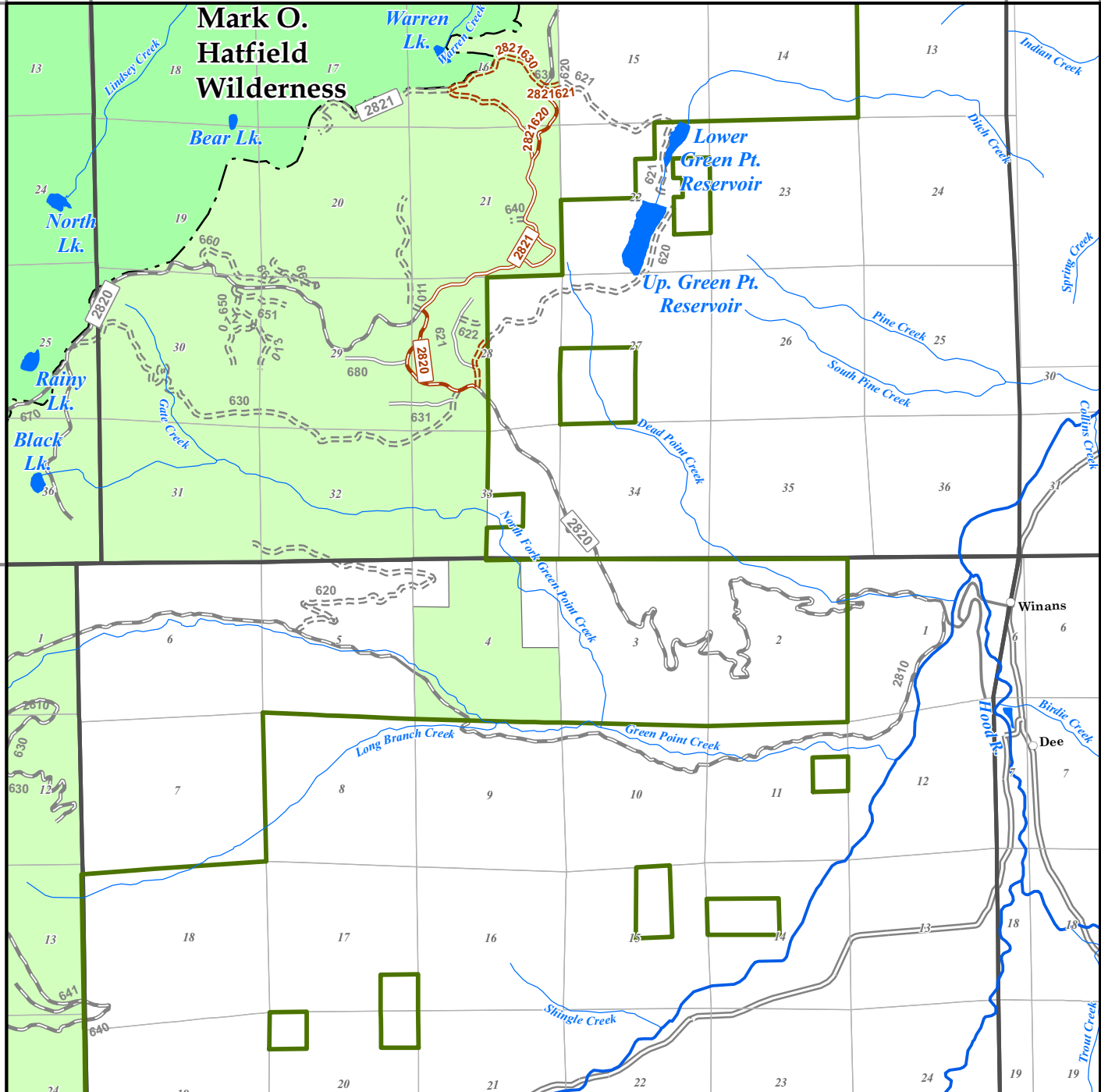
T. 1 S.

R. 8 E.

R. 8.5 E.

R. 9 E.

Mark O. Hatfield Wilderness



Mount Hood National Forest Alternative 3 OHV Proposal Mount Defiance

- | | |
|-----------------------------------|---------------------------|
| OHV Decision Roads | Highways and Roads |
| Mixed Use: OR Class I ATVs | Other Paved Roads |
| Mixed Use: OR Class I ATVs | Highways |
| Mixed Use: OR Class I ATVs | Other Features |
| Existing US Forest Service | Population Centers |
| Mt. Hood NF Boundary | Lakes, Ponds, Wetlands |
| Wilderness | Rivers |
| FS Paved Roads | Named Creeks |
| FS Gravel Roads | State, Local, Private |
| FS Improved Dirt Roads | |
| FS Dirt Roads | |



This product is produced from information prepared by the USDA, Forest Service, or from other suppliers. The Forest Service can not assure the reliability or suitability of this information for a particular purpose. The data and product accuracy may vary due to compilation from various sources, including modeling and interpretation, and may not meet National Map Accuracy Standards. This information may be updated, corrected, or otherwise modified without notification. For more information contact:

Mt. Hood National Forest, 16400 Champion Way, Sandy, OR 97055
(503) 668-1700



The USDA is an equal opportunity provider and employer.