

R. 10 E.

R. 11 E.

R. 12 E.

T. 3 S.

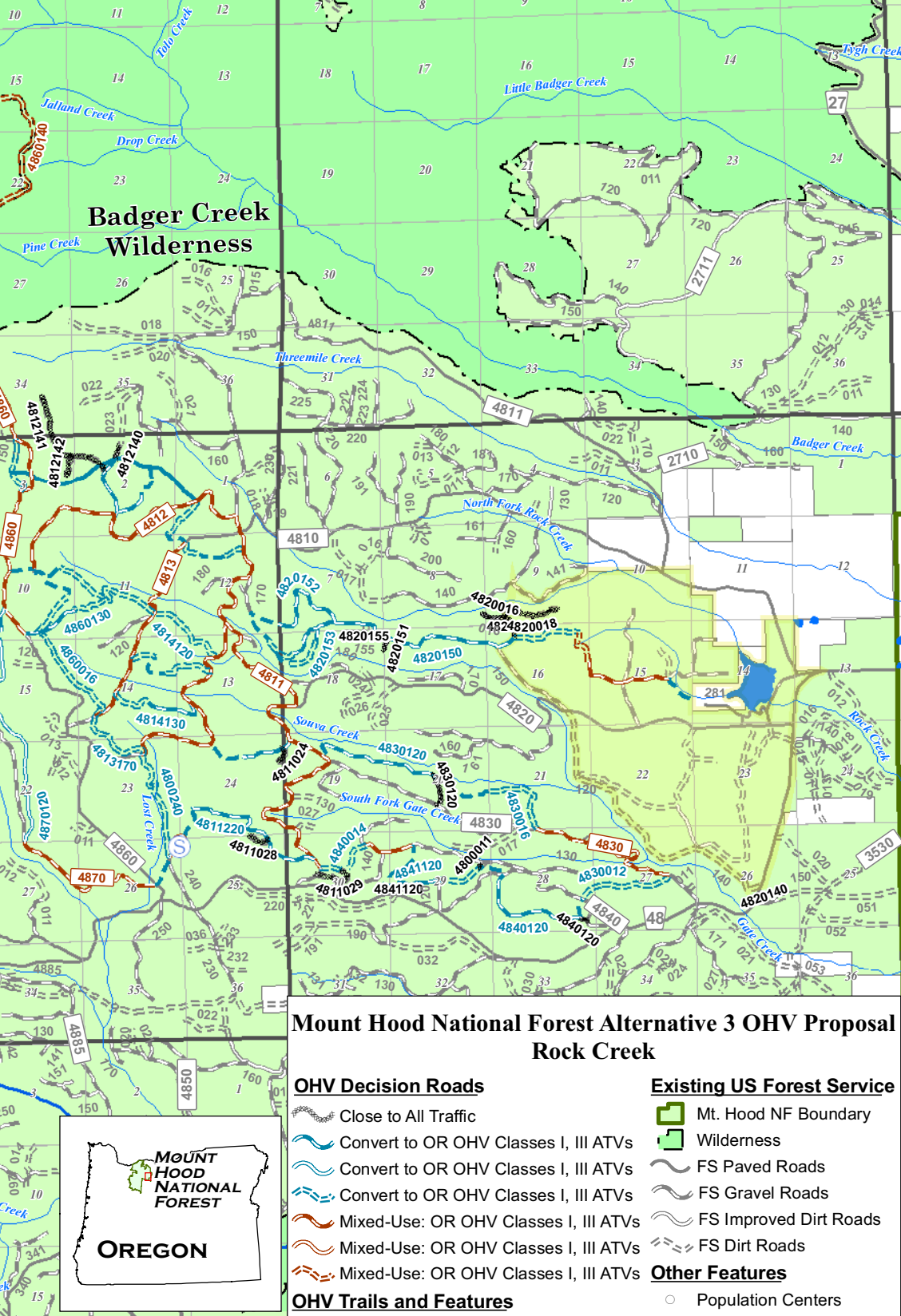
T. 3 S.

T. 4 S.

T. 4 S.

T. 5 S.

T. 5 S.



### Badger Creek Wilderness

## Mount Hood National Forest Alternative 3 OHV Proposal Rock Creek

### OHV Decision Roads

- Close to All Traffic
- Convert to OR OHV Classes I, III ATVs
- Convert to OR OHV Classes I, III ATVs
- Convert to OR OHV Classes I, III ATVs
- Mixed-Use: OR OHV Classes I, III ATVs
- Mixed-Use: OR OHV Classes I, III ATVs
- Mixed-Use: OR OHV Classes I, III ATVs

### Existing US Forest Service

- Mt. Hood NF Boundary
- Wilderness
- FS Paved Roads
- FS Gravel Roads
- FS Improved Dirt Roads
- FS Dirt Roads

### OHV Trails and Features

- Existing OR OHV Classes I, III ATVs
- Proposed OR OHV Classes I, III ATVs
- Staging Area
- Overnight Camping and
- Target Shooting Prohibited

### Other Features

- Population Centers
- Lakes, Ponds, Wetlands
- Rivers
- Named Creeks
- State, Local, Private
- Warm Springs Indian Res.



This product is produced from information prepared by the USDA, Forest Service, or from other suppliers. The Forest Service can not assure the reliability or suitability of this information for a particular purpose. The data and product accuracy may vary due to compilation from various sources, including modeling and interpretation, and may not meet National Map Accuracy Standards. This information may be updated, corrected, or otherwise modified without notification. For more information contact:

Mt. Hood National Forest, 16400 Champion Way, Sandy, OR 97055  
(503) 668-1700

The USDA is an equal opportunity provider and employer.



R. 10 E.

R. 11 E.