

# Water Resources Management

A Perspective from

Mt. Hood National Forest

# Water Resources Management

A Perspective from  
People who care about  
Mt. Hood National Forest

# Why do Water Resources Matter ?



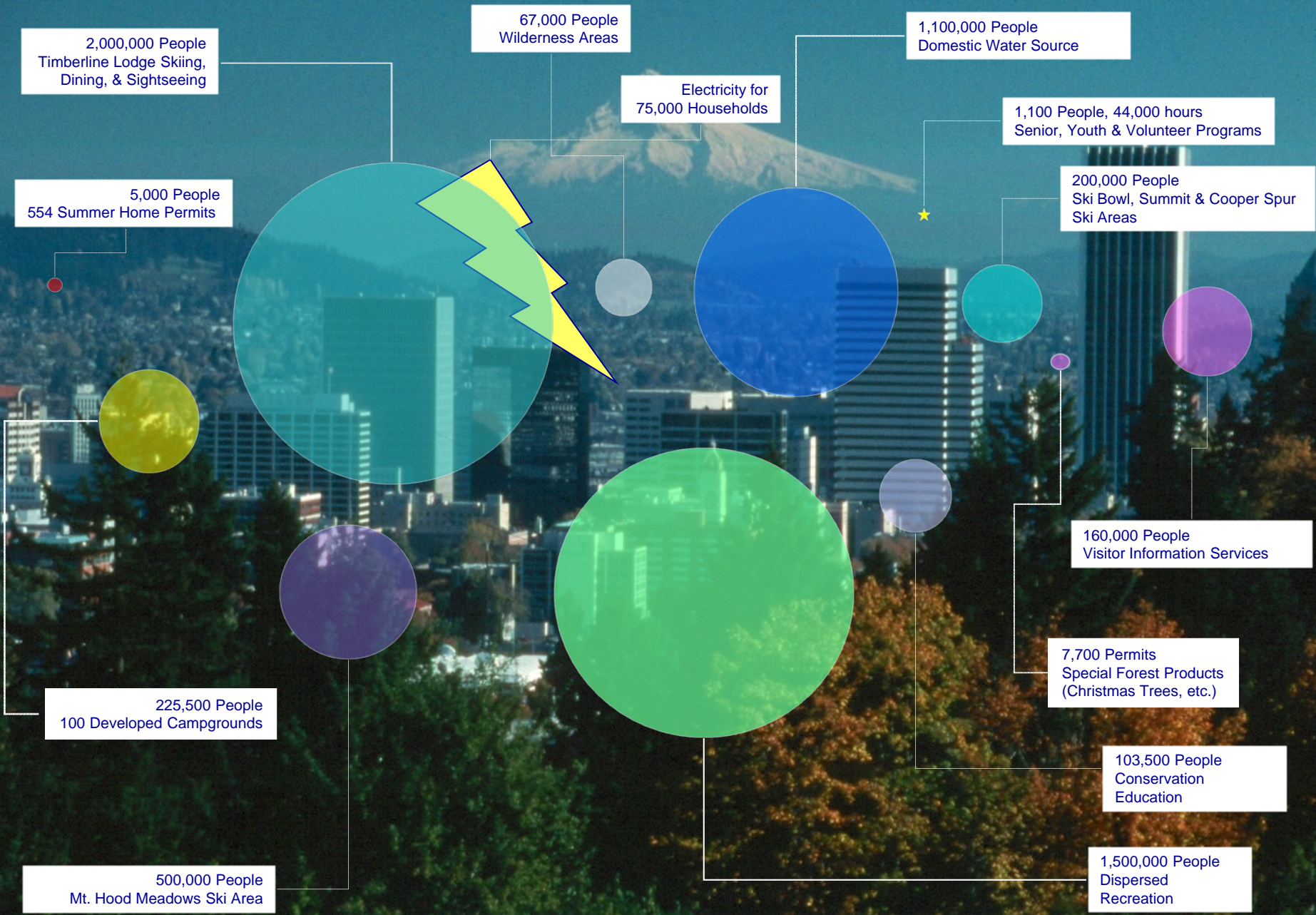


---

# How are people connected to Forest ?

Mt. Hood National Forest

---



2,000,000 People  
Timberline Lodge Skiing,  
Dining, & Sightseeing

5,000 People  
554 Summer Home Permits

67,000 People  
Wilderness Areas

Electricity for  
75,000 Households

1,100,000 People  
Domestic Water Source

1,100 People, 44,000 hours  
Senior, Youth & Volunteer Programs

200,000 People  
Ski Bowl, Summit & Cooper Spur  
Ski Areas

160,000 People  
Visitor Information Services

7,700 Permits  
Special Forest Products  
(Christmas Trees, etc.)

103,500 People  
Conservation  
Education

1,500,000 People  
Dispersed  
Recreation

225,500 People  
100 Developed Campgrounds

500,000 People  
Mt. Hood Meadows Ski Area



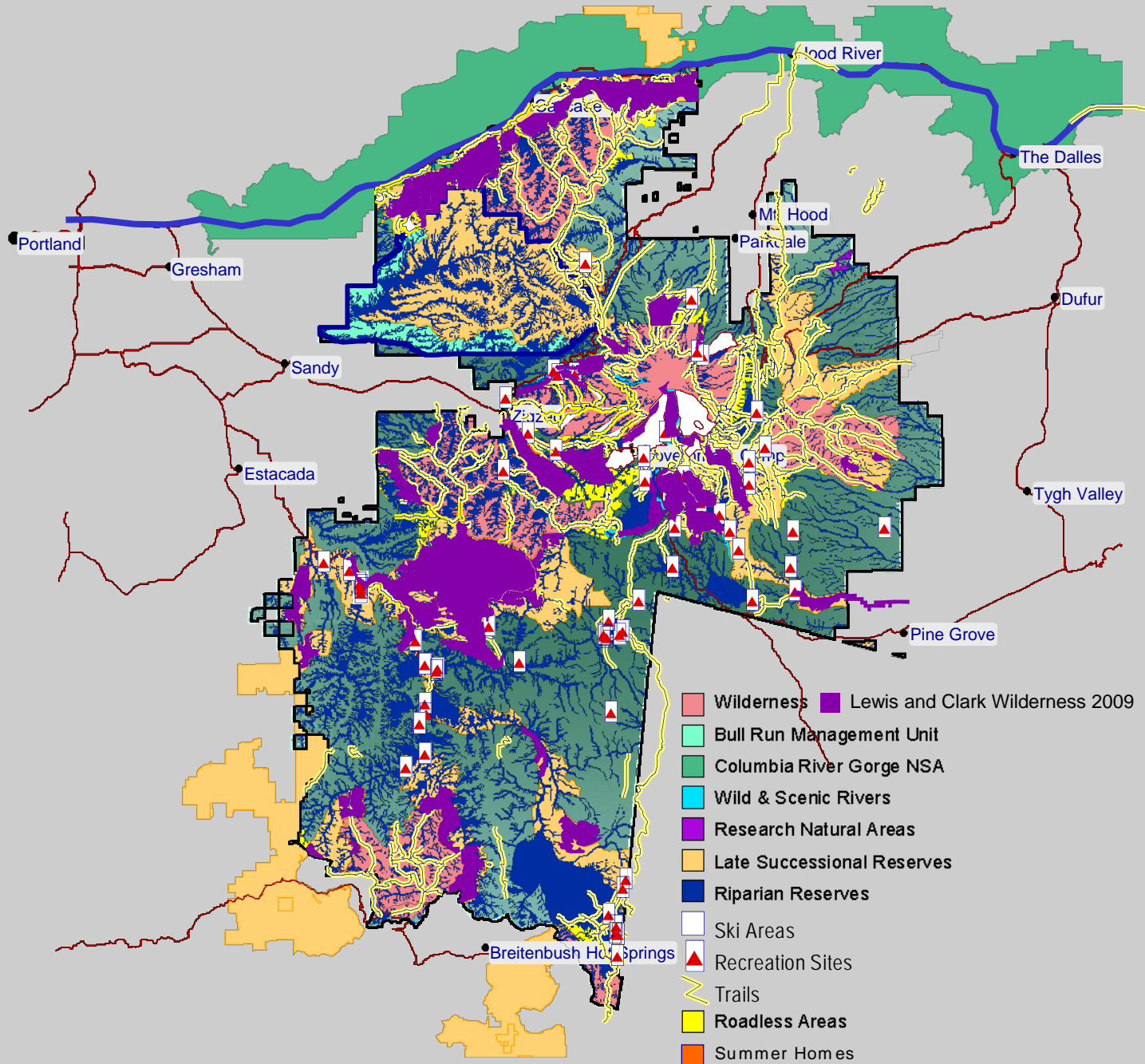


---

**Water does not exist in isolation. . . .**

Mt. Hood National Forest

---





---

# Strategic Stewardship Plan

Mt. Hood National Forest

---

June 22, 2006, PNW Regional  
Office

Mt. Hood National Forest





United States  
Department of  
Agriculture

Forest Service

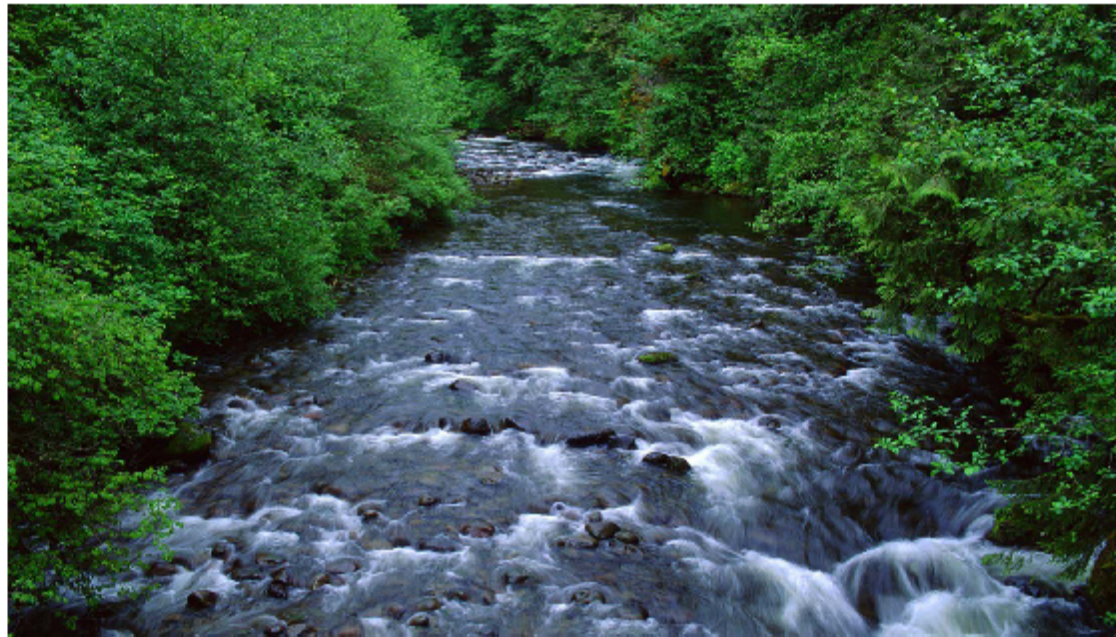
Pacific Northwest  
Region

2006

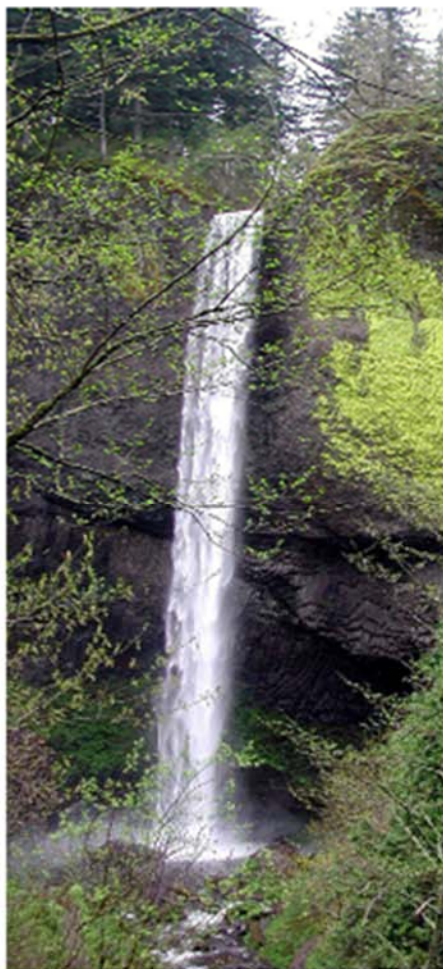


# Mt. Hood National Forest Strategic Stewardship Plan

Weaving Together the Environment, People and the Economy



*Little Sandy River, Mt. Hood National Forest*



*Horsetail Falls, Mt. Hood National Forest*

*Mt. Hood National Forest Strategic Stewardship Plan*

## **Three Guiding Principles**

### **Ecosystem Restoration**

Work actively to restore the forest's ecosystems, ecosystem processes, ecosystem functions, and recognize people as part of the ecosystem.

### **Citizen Stewardship**

Engage people in stewardship of their National Forest and its natural resources.

### **Economic Sustainability**

Secure economic sustainability of the Forest and natural resource management.

# Stewardship Challenges

- Protect Communities from wildfire;
- Restore critical public and private lands stream habitat for the recovery of aquatic species;
- Manage for a healthy forest that sustainably provides goods and services for people;
- Work with public, private, and civic interests for sustainable regional recreation; and
- Assure relevance of public lands, goods, and services in an increasingly diverse society.



*The logic of the Citizen Stewardship Plan is simple:*

**Table of Contents**

|   |    |
|---|----|
| Forest Supervisor's Foreword .....  | 1  |
| Overview of the Strategic Stewardship Plan .....  | 2  |
| Overview of Mt. Hood National Forest .....  | 3  |
| The Context for Managing Mt. Hood National Forest .....                                       | 6  |
| Many Changes Influence Management of Mt. Hood National Forest .....                           | 11 |
| How Mt. Hood National Forest Fits in the Big Picture .....                                    | 16 |
| Stewardship Challenges for the Mt. Hood National Forest .....                                 | 20 |
| Niches of Mt. Hood National Forest .....  | 24 |
| Financial and Human Resources of Mt. Hood National Forest .....                               | 33 |
| Putting the Pieces Together .....   | 35 |
| Acknowledgements .....  | 38 |
| Appendix A: Mt. Hood National Forest Inventory .....  | 40 |
| Appendix B: Defining Moments in the People's History of the<br>Mt. Hood National Forest ..... | 42 |
| Appendix C: Mt. Hood National Forest Volunteers and<br>Partners 2003 to 2005 .....            | 44 |

*Wearing Together the Environment, People, and the Economy*

Stewardship Challenges

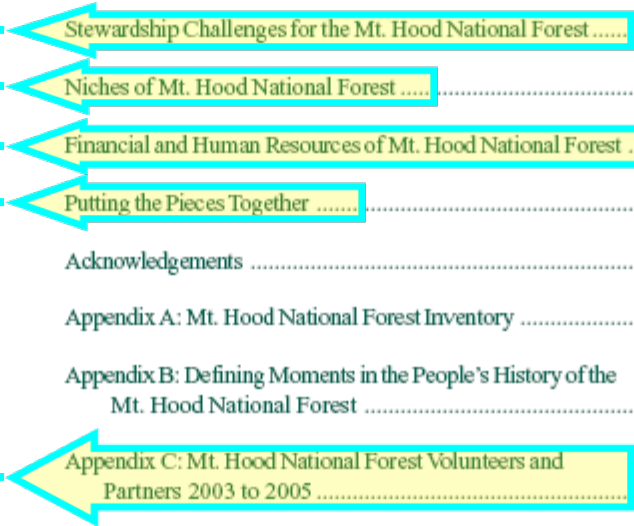
+ Mt. Hood Niches

+ Financial Resources  
and Employees who  
understand and care

= Citizen Stewardship  
Opportunities

+ Citizens who care

= Citizen Stewardship





---

# Aquatics Restoration Program

Mt. Hood National Forest

---



United States Department of Agriculture  
Forest Service

# 2008 Aquatic Restoration Program

Mt. Hood National Forest

# 2008 AQUATICS PROGRAM Annual Report

photo by Alan Dyck

MT. HOOD NATIONAL FOREST



AQUATICS PROGRAM



## 2008 Aquatic Restoration Program

Mt. Hood National Forest

### Two Goals:

1. “Systematically and purposefully reduce the potential of adverse impact of roads to the aquatic system over time. Ensure that all road-related potential impacts are identified and project proposals to mitigate the impacts are developed within a five-year time period.
2. Develop an on-going portfolio of prioritized aquatic road restoration projects for road decommissioning, road closing, or for road improvement so that the Forest can put together competitive funding proposals both within and outside the agency.”

## 2008 Aquatic Restoration Program

Mt. Hood National Forest

### Four Objectives:

1. Inventory all transportation system roads to determine the presence or absence of potential for adverse impact to aquatic function.
2. Actively involve citizens and land-owners, Tribes, and other stakeholders through collaborative dialogue and actions, and through active NEPA scoping.
3. Develop road-related aquatic restoration project proposals and make associated NEPA decisions if required.
4. Document road-related aquatic restoration project proposals and note any accompanying NEPA decisions in appropriate databases, including INFRA and FACTS.

## Legacy Road Strategy:

### 2008 Aquatic Restoration Program

Mt. Hood National Forest

- Inventory the transportation system. Evaluate the potential for negative impacts on aquatic ecosystem function. Identify treatments for roads that have potential for adverse impacts to aquatic resources.
- Involve citizens and land-owners, tribal governments, and other stakeholders in a collaborative dialogue.
- Develop site-specific, road-related aquatic restoration project proposals by watershed.
- Prioritize and implement treatments to maximize benefits based on available project funding.
- Monitor and evaluate effectiveness of restoration activities. Are we improving watershed condition and health?



# Sandy River Basin Partners

Mt. Hood National Forest

## Sandy River Basin Partners

From its headwaters high on Mt. Hood to its delta just outside of the Portland metro area, Oregon's Sandy River is a regional treasure. Since 2000, the Sandy River Basin Partners have worked to coordinate efforts for the restoration and recovery of the river's wild salmon and steelhead.



The Partners  
Contact

---

The Basin  
History  
Projects  
Background  
Stream Information  
Monitoring

---

Habitat Atlas  
Fish  
Land  
Water

# Bull Run Watershed

Mt. Hood National Forest

## **BULL RUN WATERSHED MANAGEMENT UNIT AGREEMENT**

*between*  
USDA FOREST SERVICE, MT. HOOD NATIONAL FOREST

*and*

PORTLAND WATER BUREAU

PURSUANT TO PUBLIC LAW 95-200, Section 2(d)

JULY 2007

# Bull Run Watershed

Mt. Hood National Forest

REPORT TO THE COMMUNITY FROM  
USDA FOREST SERVICE, MT. HOOD NATIONAL FOREST  
AND  
PORTLAND WATER BUREAU  
REGARDING A NEW BULL RUN WATERSHED MANAGEMENT UNIT  
AGREEMENT  
PURSUANT TO PUBLIC LAW 95-200, Section 2(d)

JULY 2007

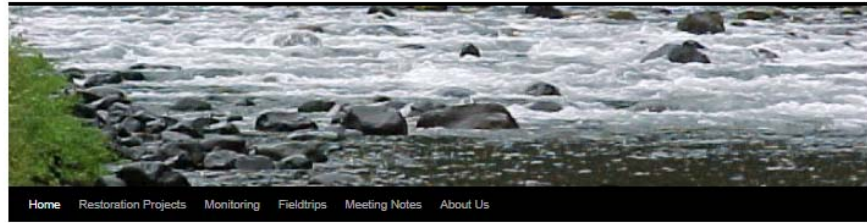


# Clackamas Stewardship Partners

Mt. Hood National Forest

## Clackamas Stewardship Partners

Restoring the Watershed — Putting  
People to Work



[Home](#) [Restoration Projects](#) [Monitoring](#) [Fieldtrips](#) [Meeting Notes](#) [About Us](#)

### Welcome to the Clackamas Stewardship Partners (CSP)

Posted on [December 23, 2010](#) by [cspadmin](#)

## Mission Statement

*Enhance ecosystem health and economic viability of local communities within the Clackamas River Basin. The Clackamas Stewardship Partners are committed to a collaborative process that employs stewardship contracting and other innovative tools to meet restoration goals.*

## Announcements

Upcoming Clackamas Stewardship Partners Monthly General Meeting:  
*Tuesday — November 8th, 2011 — 2:00pm – 4:30pm*  
*Mount Scott Fire Station, 9339 S.E. Causey Avenue, Clackamas, OR 97086*

Clackamas River Salmon and Steelhead:  
*Click [here](#) to view the daily counts of salmon and steelhead migrating up the Clackamas River (courtesy of Portland General Electric).*

Clackamas River Water Quality:  
*Click [here](#) to view water quality data for the Clackamas River (courtesy of the United States Geological Survey and Clackamas River Water Providers).*

National Watershed Condition Classification:  
*Click [here](#) to access the national Watershed Condition Classification Interactive Map (courtesy of the United States Forest Service).*

Questions? Please e-mail Nathan Poage, CSP Coordinator ([poagesblackinc@gmail.com](mailto:poagesblackinc@gmail.com)).

Posted in [Uncategorized](#) | [Leave a comment](#)

### CSP Members' Websites

- [Clackamas County](#)
- [Clackamas County Soil and Water Conservation District](#)
- [Clackamas River Basin Council](#)
- [Clackamas River Water Providers](#)
- [Gifford Pinchot Task Force](#)
- [High Cascade](#)
- [Mount Hood National Forest](#)
- [Northwest Forest Conservancy](#)
- [Northwest Oregon EC&D Council](#)
- [Oregon Department of Fish and Wildlife](#)
- [Oregon Hunters Association](#)
- [Oregon Wild](#)
- [Pacific Rivers Council](#)
- [Portland State University](#)
- [Rocky Mountain Elk Foundation \(Northwest Region\)](#)

### Other Resources

- [Bark](#)
- [Columbia Land Trust](#)
- [Headwaters Economics](#)
- [Institute for Natural Resources](#)
- [ISE – Ecosystem Workforce Program](#)
- [ISE – Institute for a Sustainable Environment](#)
- [Metro](#)
- [Oregon Forest Resources Institute](#)
- [Oregon Solutions](#)
- [Pacific Bridge Construction](#)
- [PGE – Clackamas River](#)
- [Pinchot Institute for Conservation](#)
- [Portland-Vancouver ULTRA](#)
- [Rocky Mountain Elk Foundation \(National\)](#)
- [Rural Voices for Conservation Coalition](#)
- [Sandy River Basin Watershed Council](#)
- [Sustainable Northwest](#)
- [The Intertwine](#)
- [The Nature Conservancy](#)
- [The Wetlands Conservancy](#)

### Photos

- [CSP Photos in Picasa](#)



Solving community problems in a new way.



Home | About ▾ | Our Process ▾ | Projects | News

Search...

[Home](#) > [Projects](#) > Farmer's Irrigation District Fish Screen

## Farmer's Irrigation District Fish Screen

This project involved developing, prototyping, and utilizing fish-friendly screens for the irrigation district to help provide long-term sustainability for the orchard industry in Hood River.

The project was planned to be accomplished in three phases: field testing of the screens, development and implementation of a business strategy to generate revenue from screen production, and using proceeds from the screen development to enhance sustainable agricultural practices in the Hood River Valley.

### Results

- The Farmers Irrigation District developed low approach velocity, horizontal screens with no moving parts. These systems greatly reduce operation and maintenance costs compared to conventional fish screening devices.
- A prototype of the first screen technology, currently called the "overshot screen", has demonstrated safe fish passage with no injuries. A full-scale installation of this screen has undergone testing on the Hood River.
- The second screen technology is an adaptation of the first and is currently called the "undershot screen". The undershot screen will be tested for fish protection and hydraulic integrity.

### Additional Resources

[Farmer's Irrigation District](#)

## Project Details

**Status:** [Completed Projects](#)

**Start Year:** Designated in 2002

**Region:** [Portland Metro](#)

**Location:** Hood River, OR

**Project Manager:** Abby White

**Coauthors:** Holly Cocoli, Hood River Watershed Group

## Project Files

[Declaration of Cooperation](#)

[\[view more\]](#)

## Partners

### Government

[Bonneville Power Administration](#)

[Confederate Tribes of Warm Springs](#)

[Farmer's Irrigation District](#)

[Hood River Watershed Group](#)

[Middle Fork Irrigation District](#)

[NOAA Fisheries](#)

[Oregon Department of Fish and Wildlife](#)

[Oregon Economic & Community Development](#)

[Oregon Watershed Enhancement Board](#)

[OSU Extension](#)

[Southern Oregon University](#)

[US Bureau of Reclamation](#)

[US Fish and Wildlife Services](#)

[US Forest Service](#)

### Nonprofit Organizations

[Mt. Hood Economic Alliance](#)

[Small Business Development Center](#)

### Private

[Anderson and Perry Engineering](#)

[Craven Consulting Group](#)

[Northwest Riverworks Corporation](#)

[Seaborn Engineering](#)

# Fish Screens

Mt. Hood National Forest

# Cascade Streamwatch at Wildwood Recreation Site

[Getaways Close to Home](#) > Cascade Streamwatch at Wildwood Recreation Site (OR)

## Location

39 miles east of Portland, Oregon.

## Description

Located along the Salmon Wild and Scenic River, Wildwood Recreation Site is a day-use area that is home to the Cascade Streamwatch and Wildwood Wetland Trails. These trails provide visitors with a unique opportunity to explore natural stream and wetland ecosystems along barrier-free interpretive trails and boardwalks. From the Cascade Streamwatch Trail, visitors can view young salmon and steelhead in a natural stream through an in-channel glass viewing structure. Wildwood offers family picnic units, group day-use shelters, playing fields, Salmon River access trails, and walking trails. The historic Barlow Road, which crosses Wildwood, is an Oregon Trail site, easily accessible from U.S. Highway 26.

## Directions

From Portland, take Interstate 84 east to Exit 16, towards Wood Village. Turn right onto 238th Drive and follow it for approximately 4 miles. Turn left onto Burnside Street, which becomes U.S. Highway 26. Proceed east on U.S. Highway 26; the Wildwood Recreation Site is located on the south side of the highway, 1 mile west of the community of Welches.

## Visitor Activities

Self-guided interpretive walks, picnicking, wildlife viewing, birdwatching, swimming, historic site, fishing, and hiking.

## Special Features

The Cascade Streamwatch project, a collaborative effort among BLM, the U.S. Forest Service, and the non-profit Wolfree, Inc., has restored over 2 miles of fisheries habitat and developed facilities that offer visitors a chance to view and learn firsthand about anadromous fish in their natural habitat. The network of barrier-free trails is highlighted by creative sculptures, models, interpretive signing, and kiosks.

## Permits, Fees, Limitations

Fees vary. Please contact BLM for more information.

## Accessibility

Both the Cascade Streamwatch and Wildwood Wetland Trails are wheelchair-accessible, as are restrooms, paved trails, and picnic sites.

## Camping and Lodging

There is no overnight camping on-site. There are several private overnight accommodations in nearby towns, including Welches (1 mile east), Government Camp (13 miles west), and Sandy (16 miles east).

## Food and Supplies

Food and supplies are available in Welches.

## First Aid

Emergency services are available in Gresham (28 miles northwest) or Portland.

Cascade Streamwatch at Wildwood Recreation Site



The developed facilities at Cascade Streamwatch include a unique underwater stream-viewing chamber along a restored side channel of the Salmon Wild and Scenic River. (BLM)

# Cascade Stream Watch

## Mt. Hood National Forest