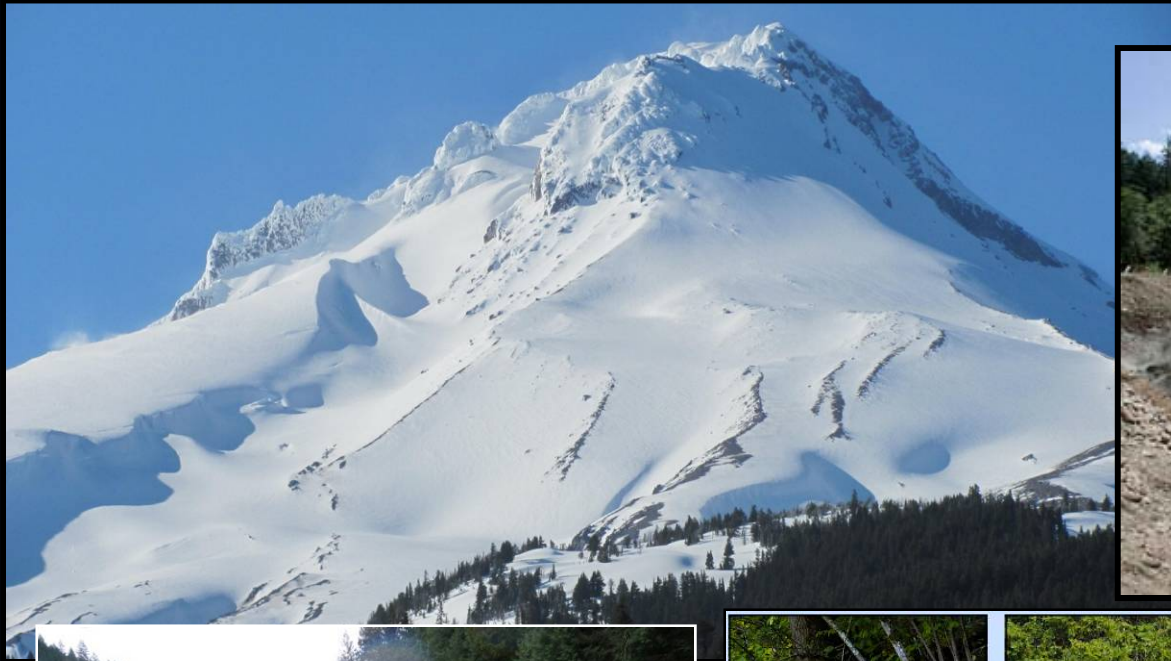


Sandy Basin: No (Dam) Problem



*Steve Wise, Sandy River Basin Watershed Council
Mt Hood Solutions Summit Nov. 2, 2011*

Reconnections

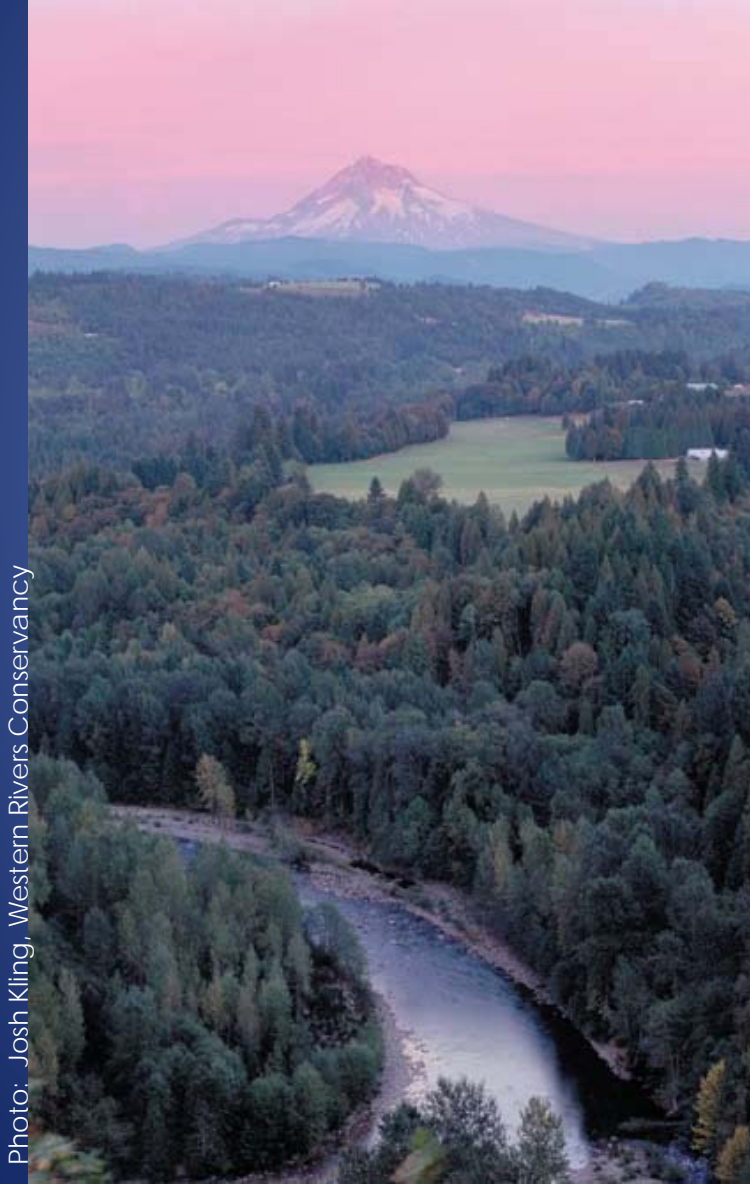


Photo: Josh Kling, Western Rivers Conservancy

Sandy River Basin
Watershed
Council mission:
*To restore and
protect the
natural, cultural,
and historical
resources of the
Sandy River
basin.*

The Chicago Way

“all the drainage of the square mile of packing houses empties into it, so that it is really a great open sewer a hundred or two feet

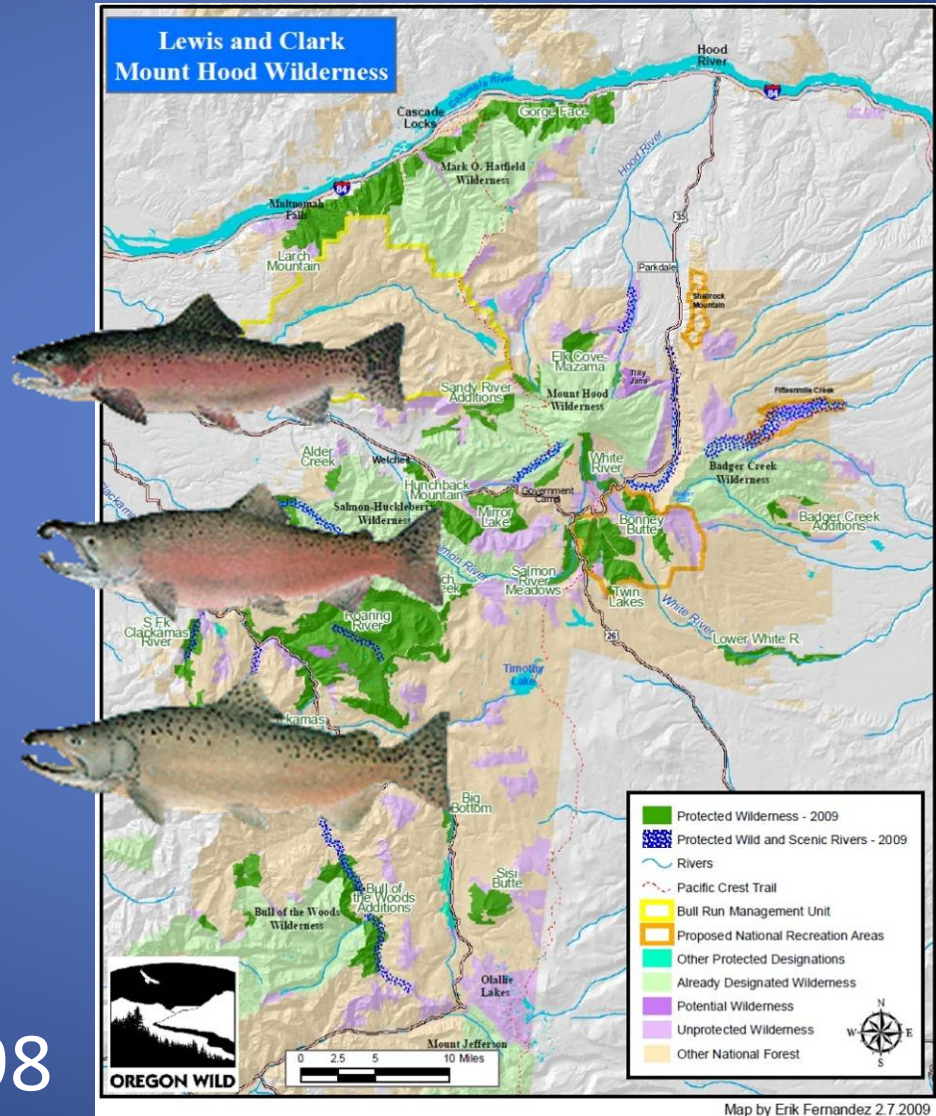


'Things look different here'



'...No Brainer...'

-- Kitzhaber 1998



The Sandy Flows Free Again

2007 – PGE Decommissions Marmot Dam



Sandy River Basin Partners

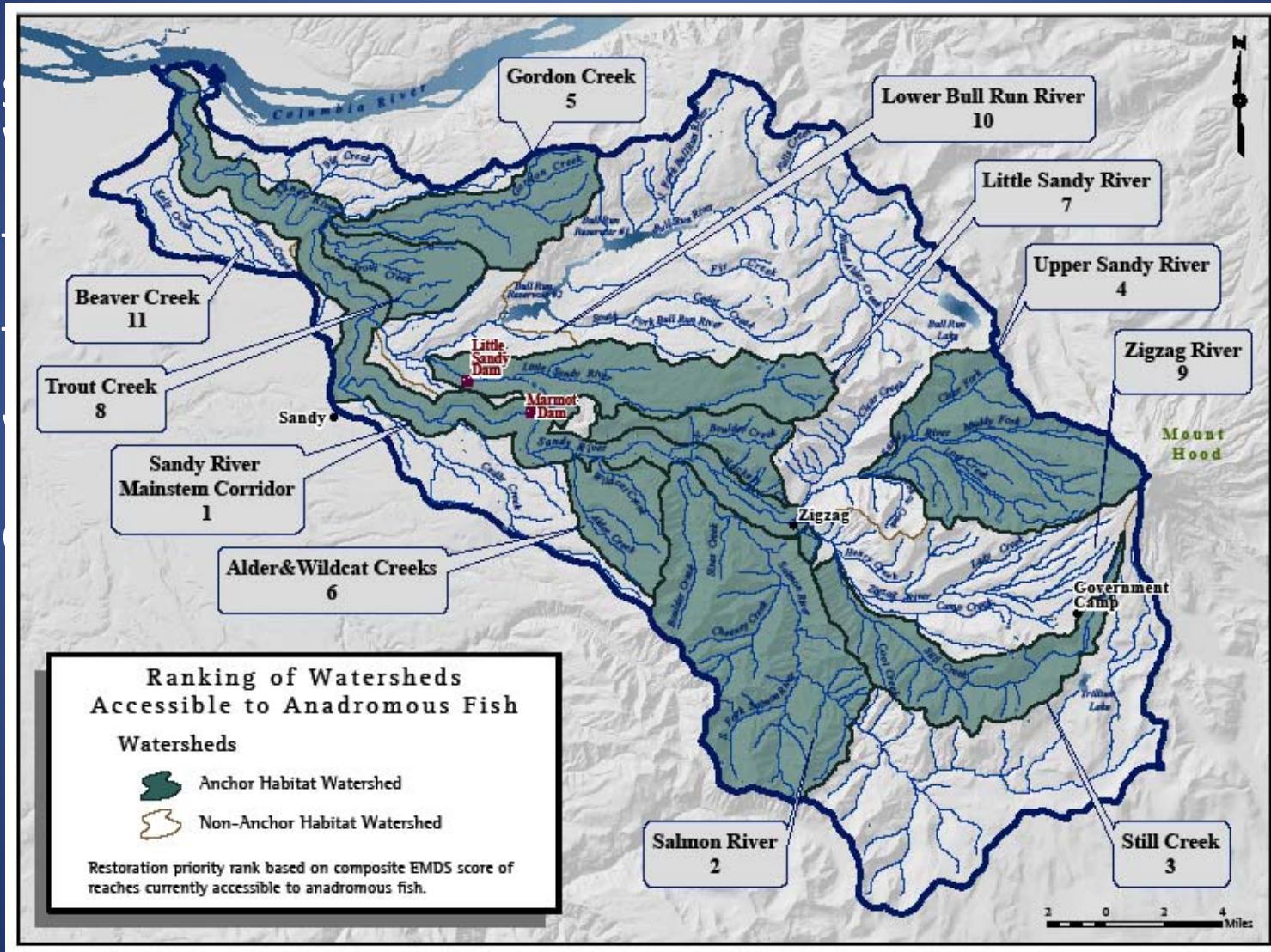
Collective Vision

*“By 20XX ... watershed conditions that support:
(1) sustainable fish populations;
(2) recreational fishing opportunities,
(3) use of clean and dependable drinking water;
and
(4) diverse aquatic recreational opportunities”*

-- 12 organizations



Sandy River Basin Partners



Fire



Ross Hamilton – The Oregonian

Wood



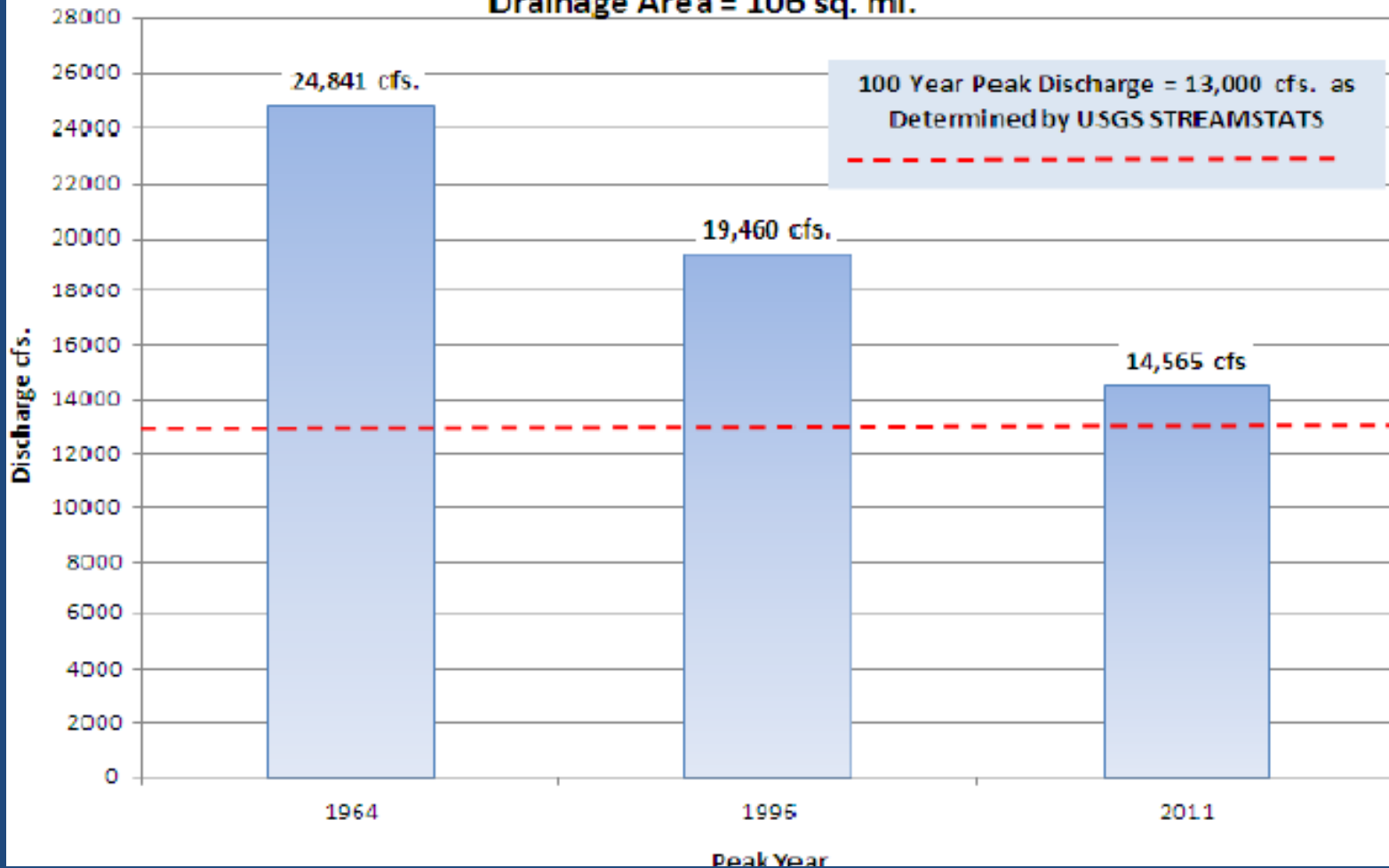
- Then (1964)...

... and now.

Flood

January 2011 Flood

Historic Peaks for Salmon River at Project
Drainage Area = 106 sq. mi.



three

Share
Email
Print

heavy rain and
dy River
ntial areas on
d late Sunday
away homes,
ing out large
s Road.

ed its course,
cial yards that
van, riverside

river now,"
of the area for
to a neighbor
rd is now

atched her

Infrastructure

Home > Clackamas County News > Breaking News

Welches flooding causes raw sewage overflow into Sandy River

Published: Wednesday, January 19, 2011, 4:33 PM

By Yuxing Zheng, The Oregonian
Follow

Recommend 8 people recommend this.



Heavy rains and flooding caused raw sewage to spill into the Sandy River near Welches during a 14-hour shutdown of a pump station on Sunday, a Clackamas County official said.

Clackamas County Service District No. 1 workers restored the Timberline Rim sanitary sewer pump station around 8 a.m. Monday, said Amy Kyle, a spokeswoman for the county's **Water Environment Services**. The pump station was not in a residential area.

Crews had to walk to the flooded pump station on foot and are still in the process of assessing the extent and size of the spill, Kyle said.



- Roads, bridges, utilities, sewer, water supply
- Question: How Many pipelines cross the Sandy(insert your river/watershed here)?



Real Estate

(Love knows no geomorphological bounds)



Timberline Rim Parcels over 2007 LiDAR

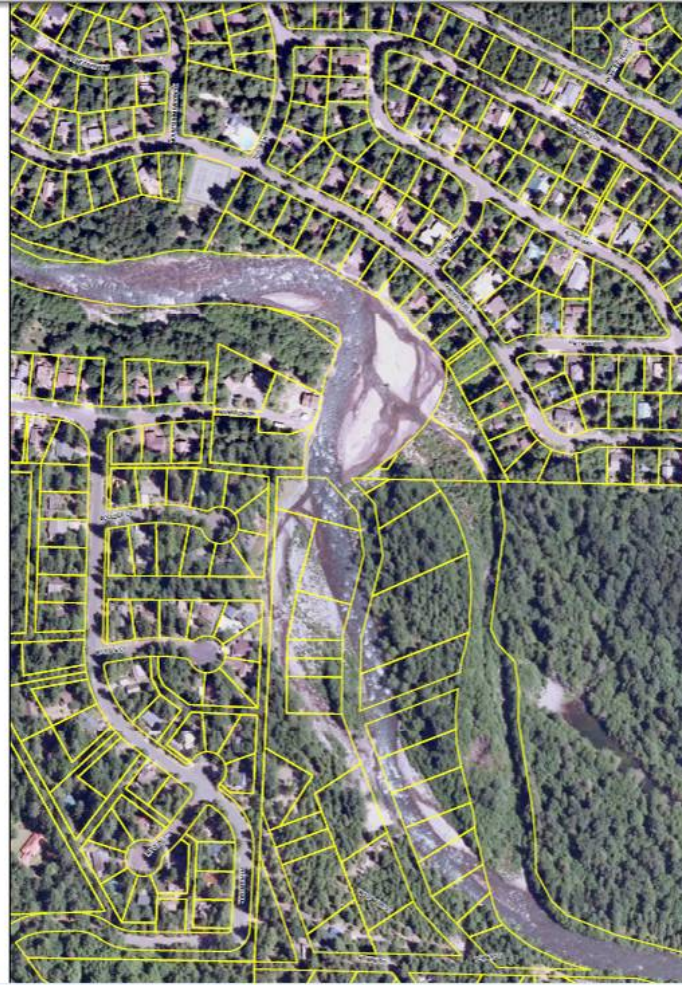
Community-based solution: Restorative Flood Response



Channel Migration



2005

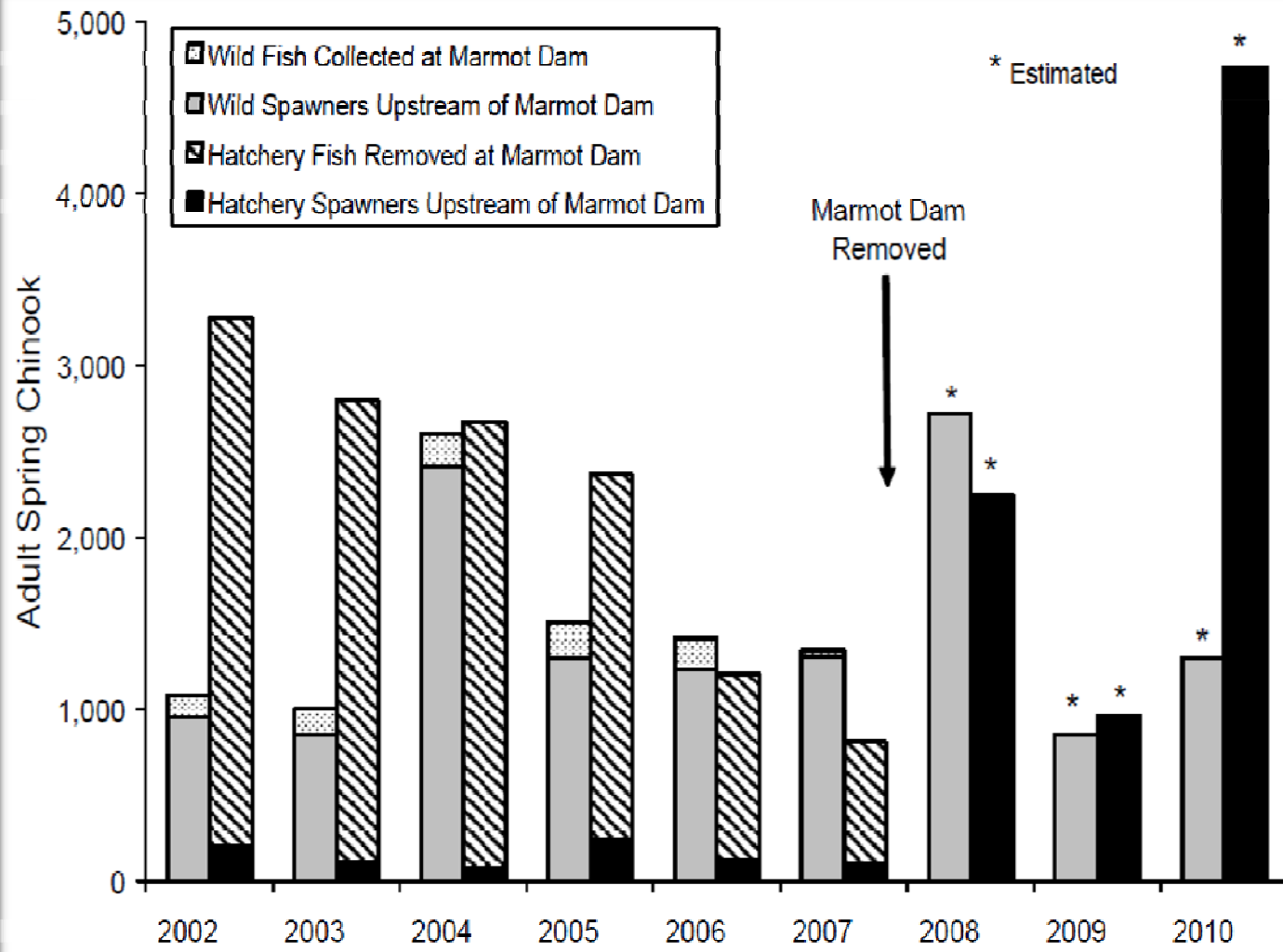


2008



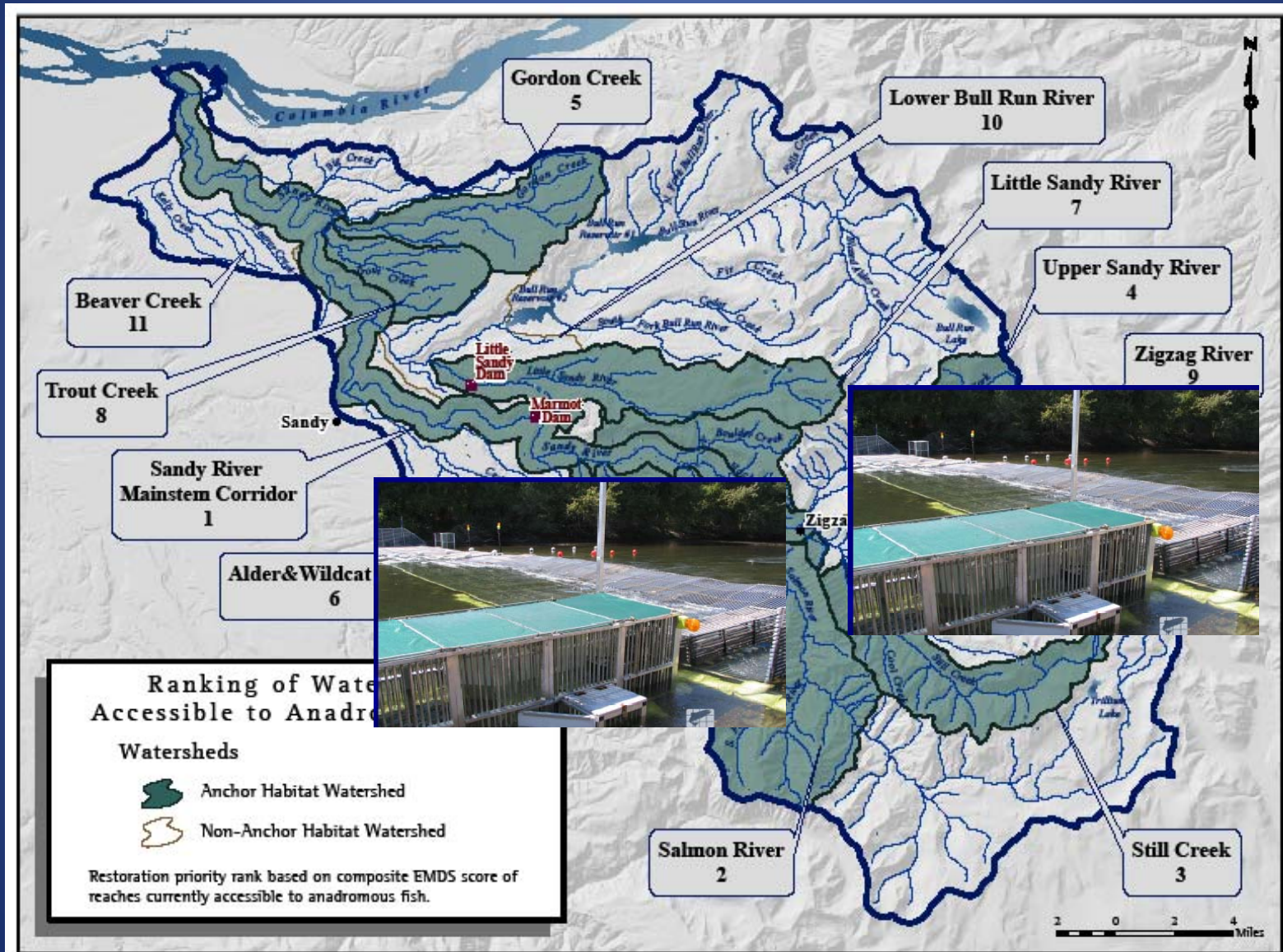
2009

Stray (No Dam) Problem



Source: Oregon Department of Fish and Wildlife

Stray Solution?



Source: Oregon Department of Fish and Wildlife

Patience



Thank You

Steve Wise

swise@sandyriver.org

503-668-1428



Portland Water Bureau photo