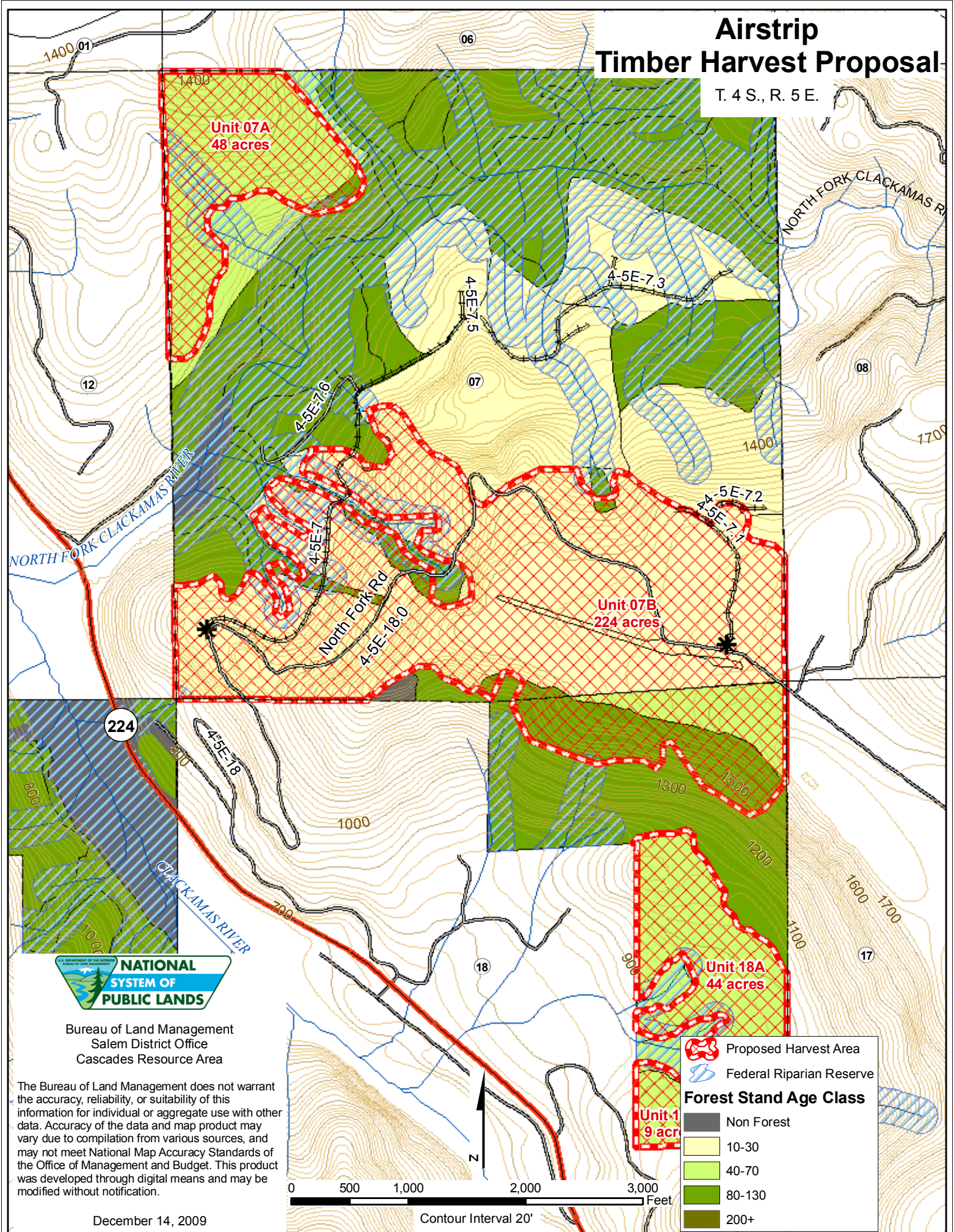


# Airstrip Timber Harvest Proposal

T. 4 S., R. 5 E.



Bureau of Land Management  
Salem District Office  
Cascades Resource Area

The Bureau of Land Management does not warrant the accuracy, reliability, or suitability of this information for individual or aggregate use with other data. Accuracy of the data and map product may vary due to compilation from various sources, and may not meet National Map Accuracy Standards of the Office of Management and Budget. This product was developed through digital means and may be modified without notification.

December 14, 2009

Contour Interval 20'

	Proposed Harvest Area
	Federal Riparian Reserve
<b>Forest Stand Age Class</b>	
	Non Forest
	10-30
	40-70
	80-130
	200+