



Defending Mt. Hood  
for 10 Years



BARK

# **Mt. Hood Off-Highway Vehicle (OHV) Management Plan**



After two years of preparation, the Forest Service released a Draft Environmental Impact Statement (DEIS) for the OHV Plan. The plan designates specific locations in Mt Hood National Forest for OHVs. Riding anywhere else becomes illegal.



- 53.5% of all visitors to Mt. Hood National Forest participate in day hikes, with 22.8% of visitors reporting this as the primary purpose for their visit. Other popular activities on Mt. Hood include backpacking, bicycling, skiing (downhill and cross country), family gatherings, fishing, picnicking, relaxing, and viewing natural features or wildlife.
- In contrast, only .16% of all recreation visits to Mt. Hood National Forest were for the primary purpose of OHV recreation. Only .52% of the all visitors to Mt. Hood participate in OHV recreation

Source: OHV Management Plan DEIS at 3-6, 7, 8

# **OHVs and OHV users have very serious impacts on Mt. Hood National Forest**





OHVs cause erosion, harming fish and wildlife



OHVs have started forest fires



OHV areas are often marked by excessive litter and other indications of lawless behavior

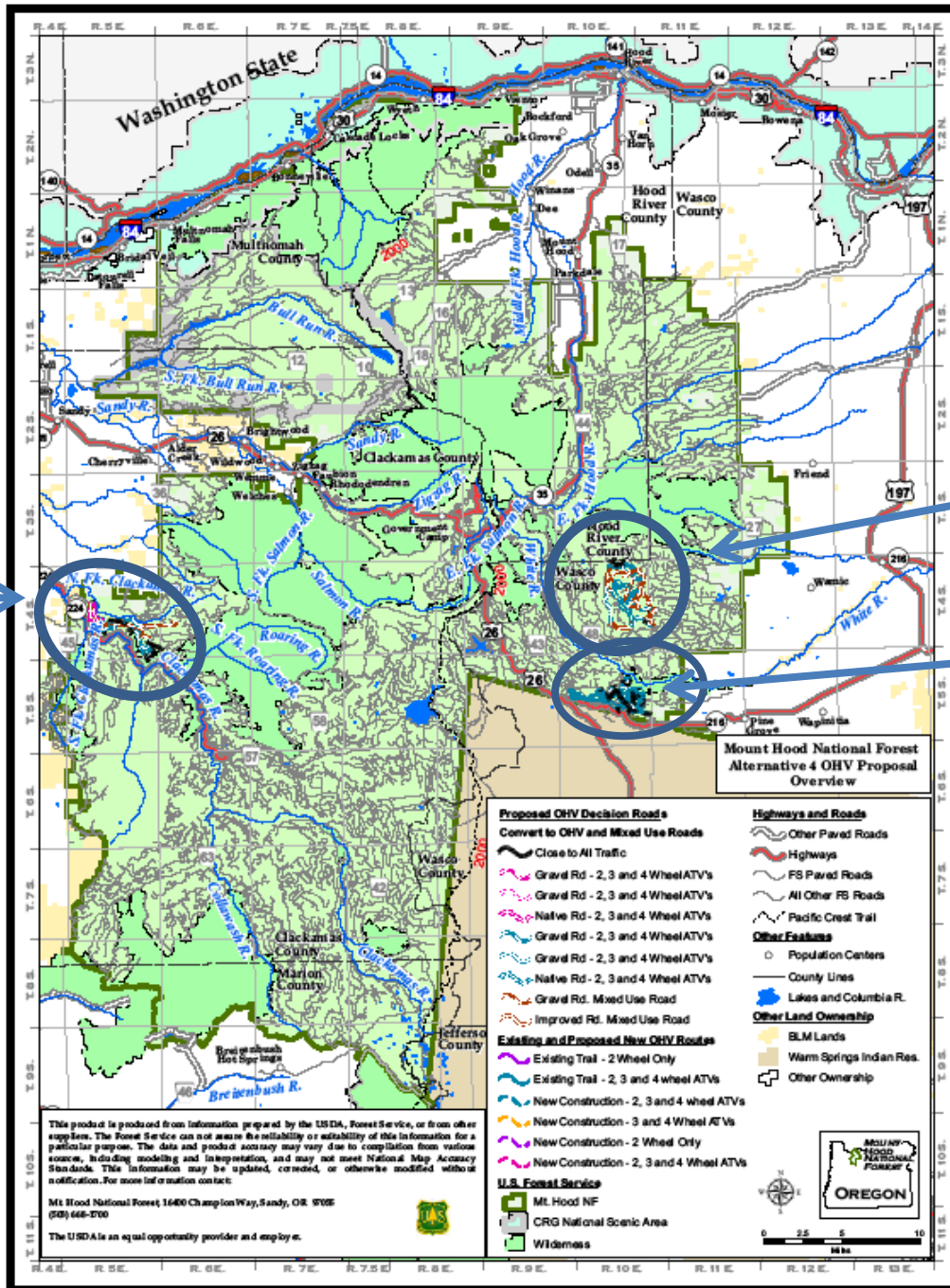


**Bark believes that everyone has a right to use the forest, but no one has a right to abuse it.**

## THE GOOD

The Forest Service has not yet selected an OHV Plan. They have instead presented two “preferred alternatives” for the public to comment on. One of the options is ***Alternative 4***, which takes a balanced approach to OHV planning.

Alternative 4 protects our drinking water and our rivers from the environmental impacts caused by OHV use. Alternative 4 also recognizes the needs of quiet recreationists such as hikers, anglers, hunters, picnickers, and equestrians by protecting areas that are significant to these user groups.



LaDee Flat

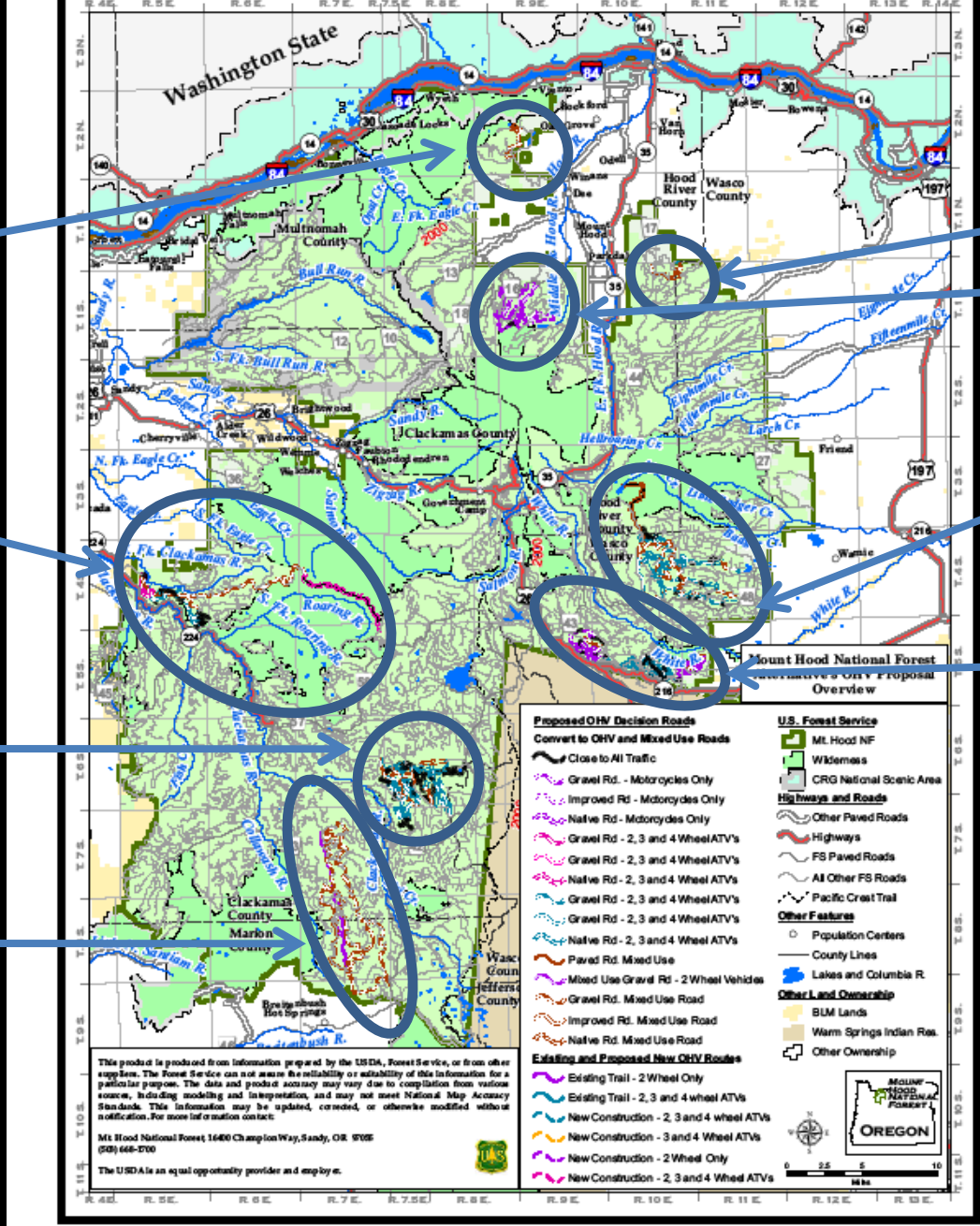
Rock Creek

McCubbins Gulch

# THE BAD

The other "preferred alternative" is *Alternative 3*. Alternative 3 is an extreme plan that favors the desires of OHV users over all other forest user groups. The plan described in Alternative 3 features a 105-mile increase over the original proposal two years ago.

Alternative 3 includes routes through important wildlife habitat and which run alongside designated Wilderness areas. Alternative 3 also disregards safety and law enforcement needs by proposing OHV areas in the remote backcountry, which are difficult for emergency services and law enforcement to access.



Mt. Defiance

Gibson Prairie

Bear Creek

LaDee Flat

Rock Creek

Peavine

McCubbins Gulch

Graham Pass

# A Side by Side Comparison of the two Preferred Alternatives

## ALTERNATIVE 3

Number of Areas: **8**

Miles of Routes: **325**

Miles of New Construction: **69**

Number of Streams Crossed: **161**

Adjacent Wilderness Areas:

- **Salmon-Huckleberry**
  - **Roaring River**
  - **Badger Creek**
    - **Mt. Hood**
- **Mark O. Hatfield**
  - **White River**

## ALTERNATIVE 4

Number of Areas: **3**

Miles of Routes: **100**

Miles of New Construction: **9**

Number of Streams Crossed: **46**

Adjacent Wilderness Areas:

**White River**

# The Forest Service is seeking comments about these two preferred alternatives

## Bark's suggestions for your comments

- Thank the Forest Service for listening to the voices of the majority of interests in Mt. Hood National Forest by creating Alternative 4 and urge them to adopt Alternative 4
- Let the Forest Service know that Alternative 3 too extreme. Mt. Hood does not need 8 OHV areas.
- Point out *your* specific concerns.
  - Are any of the proposed OHV areas close to where you love to go hiking, hunting, fishing? Are you concerned that OHV use and quiet recreation might be incompatible in those areas?
  - Are you concerned that law enforcement officers may not be able to prevent unlawful behavior in remote OHV areas or that these areas may be difficult for emergency health personnel to access?
  - Raise your concerns about the impacts OHVs may have on wildlife, drinking water, air quality, wilderness areas, etc.
  - Tell the Forest Service about any personal experiences you have had with OHVs in the Forest and whether you will continue visiting parts of the Forest where OHV use is permitted.

# Comments are Due on October 28th

The most important thing you can do is participate in the open public comment period TODAY!

Send to:

Jennie O'Connor Card

Mt. Hood National Forest

6780 Highway 35 Parkdale, Oregon 97041

(541) 352-6002 ext. 634

[comments-pacificnorthwest-mthood@fs.fed.us](mailto:comments-pacificnorthwest-mthood@fs.fed.us)

If you would like help or need resources while writing your comments, contact Bark. Remember that your views are important to this process whether you use OHVs or not and especially if you care about the future of Mt. Hood National Forest!